

CONSTANT AUTO-SEALER

200CFA, 300CFA, 400CFA, 600CFA

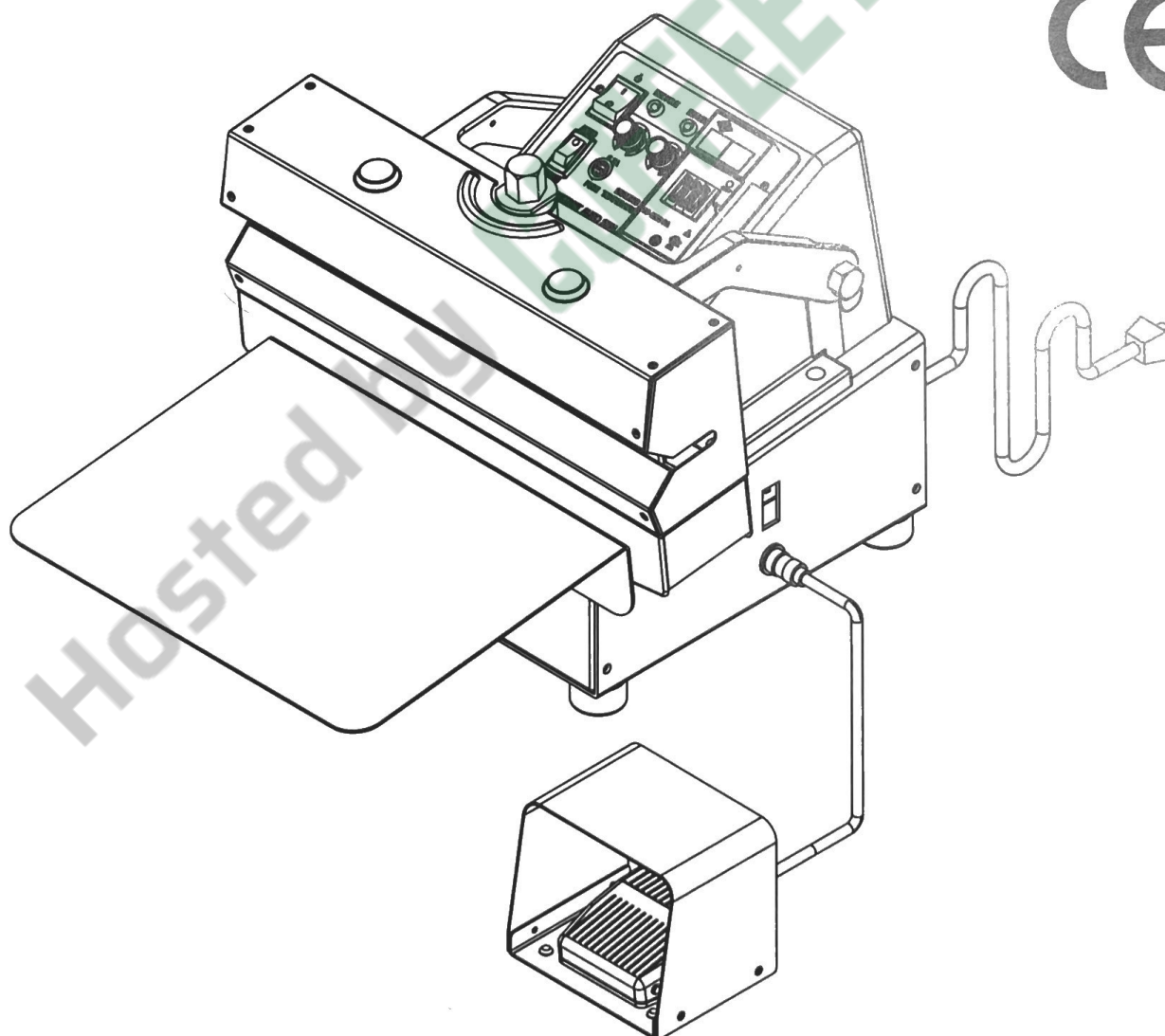
200CSA, 300CSA, 400CSA, 600CSA with Micro-Controller

200CFV, 300CFV, 400CFV, 600CFV

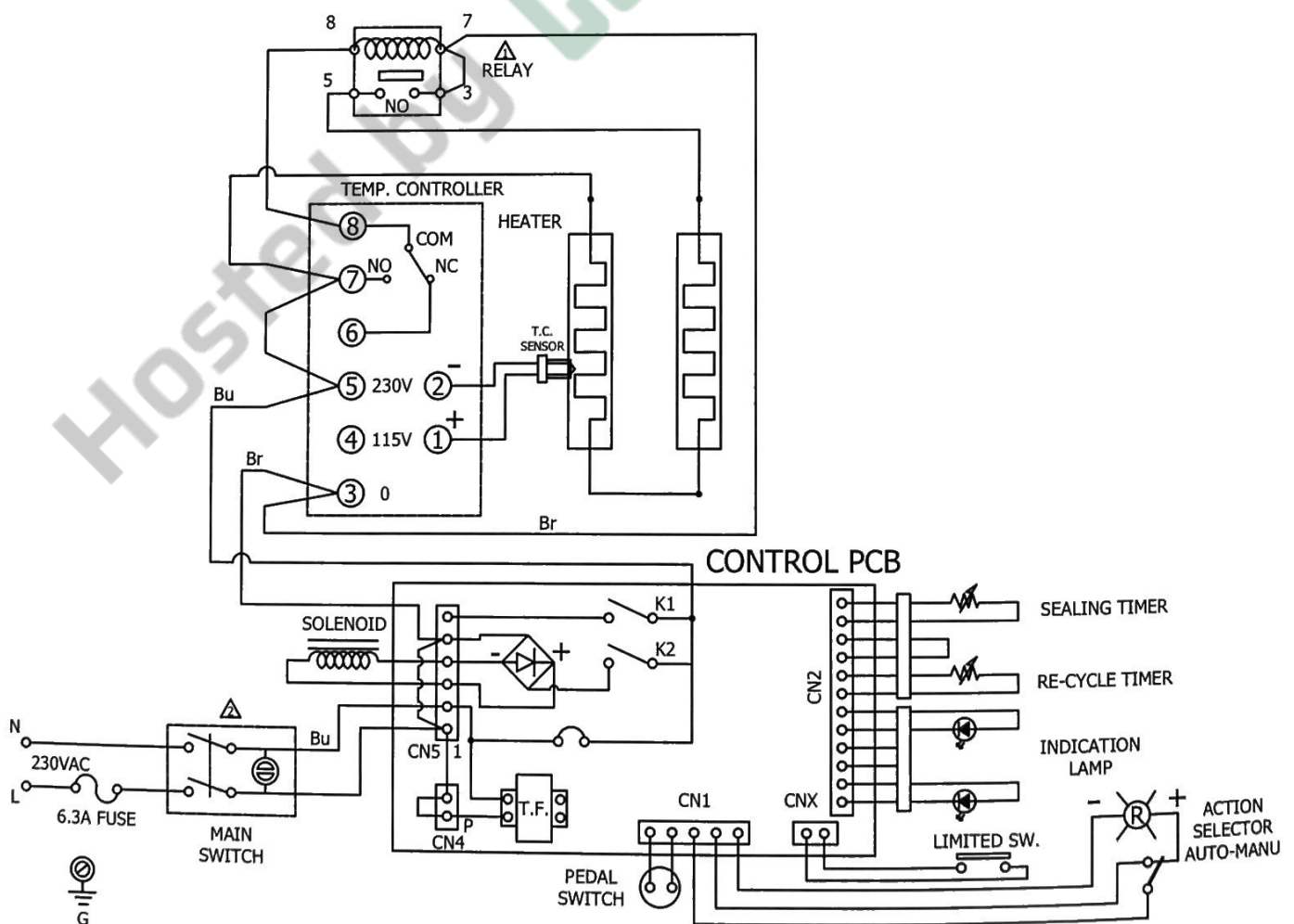
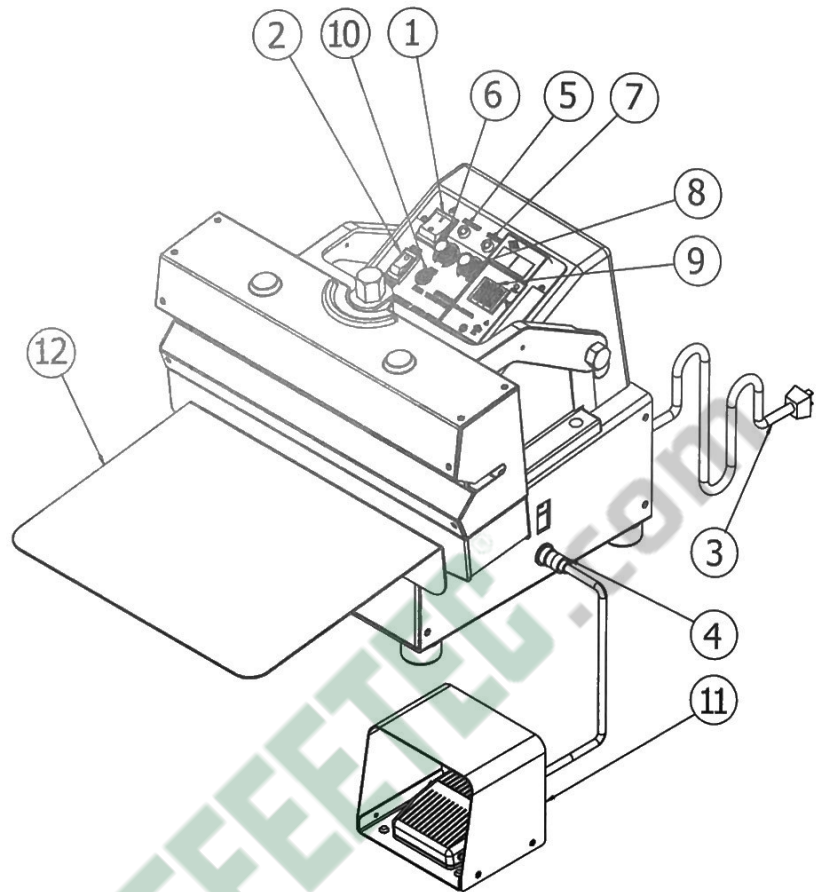
(200CA, 300CA, 400CA, 600CA)

(CFA & CSA Tabletop Series, CFV & CSV Floor Series)

INSTRUCTION MANUAL



1. Power Main SW.
2. Auto Switch
3. Power Supply Card
4. Socket for Pedal SW.
5. Re-Cycle Indication Lamp
6. Re-Cycle Timer Knob
7. Sealing Indication Lamp
8. Sealing Timer Knob
9. Temperature Controller
10. Fuse Holder
11. Pedal Switch
- 12 Working Plate



3. OPERATING INSTRUCTION (CFA-SERIES)

After the machine is fully assembled, do the following.

1. With the power plug into an AC outlet. Turn on main switch to ON position, yellow light appears.
2. Adjust the temp. control knob to the 110°C suitable scale for thickness and material of bag. The green light will change into red light about five minutes; it is the warm up time.
3. Adjust the sealing knob (heating time) according to bag thickness and material.
4. Adjust re-recycle timer knob according to working speed of the operator.
5. Select to MANU position for manual operation by pressing the foot pedal switch, or select to AUTO position for automatic operation according to your packing timer setting.
6. Inset sealed bag to seal in between sealing jaws, than press the foot pedal switch, sealing pilot lamp will go on, it is the heating time. The time is off automatically, follows the lamp and time trans-change Re-cycle, It is the cycle wait time. If sealing does not complete, turn the temp. control and sealing timer knob up a little and go through process repeat program. Keep increasing the number until you get desired seal. Then you can remove the sealed bag and begin to operation.
7. Turn off machine when not in use.

Note: Heat temp. & Heat time is according to the thickness and material of the plastic bags. Re-recycle timer is according to working speed of the operator.

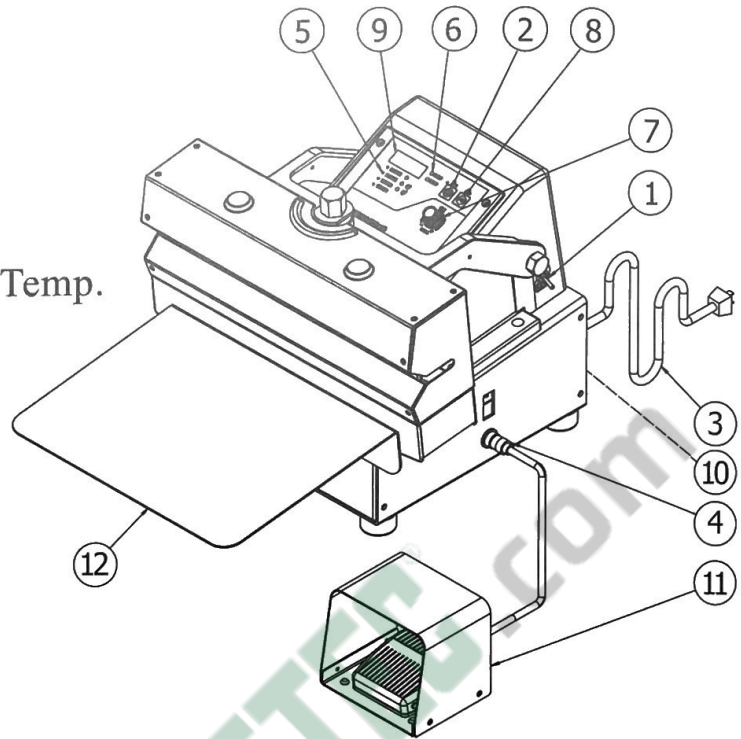
CAUTION:

The machine has an added safety feature for your protection. Upper the press jaw will fail to close completely if a foreign object as a finger or tool is between the jaws. To reactive the sealer, turn off the power main switch, wait 3 seconds and put switch back on, machine will again be operational.

4.

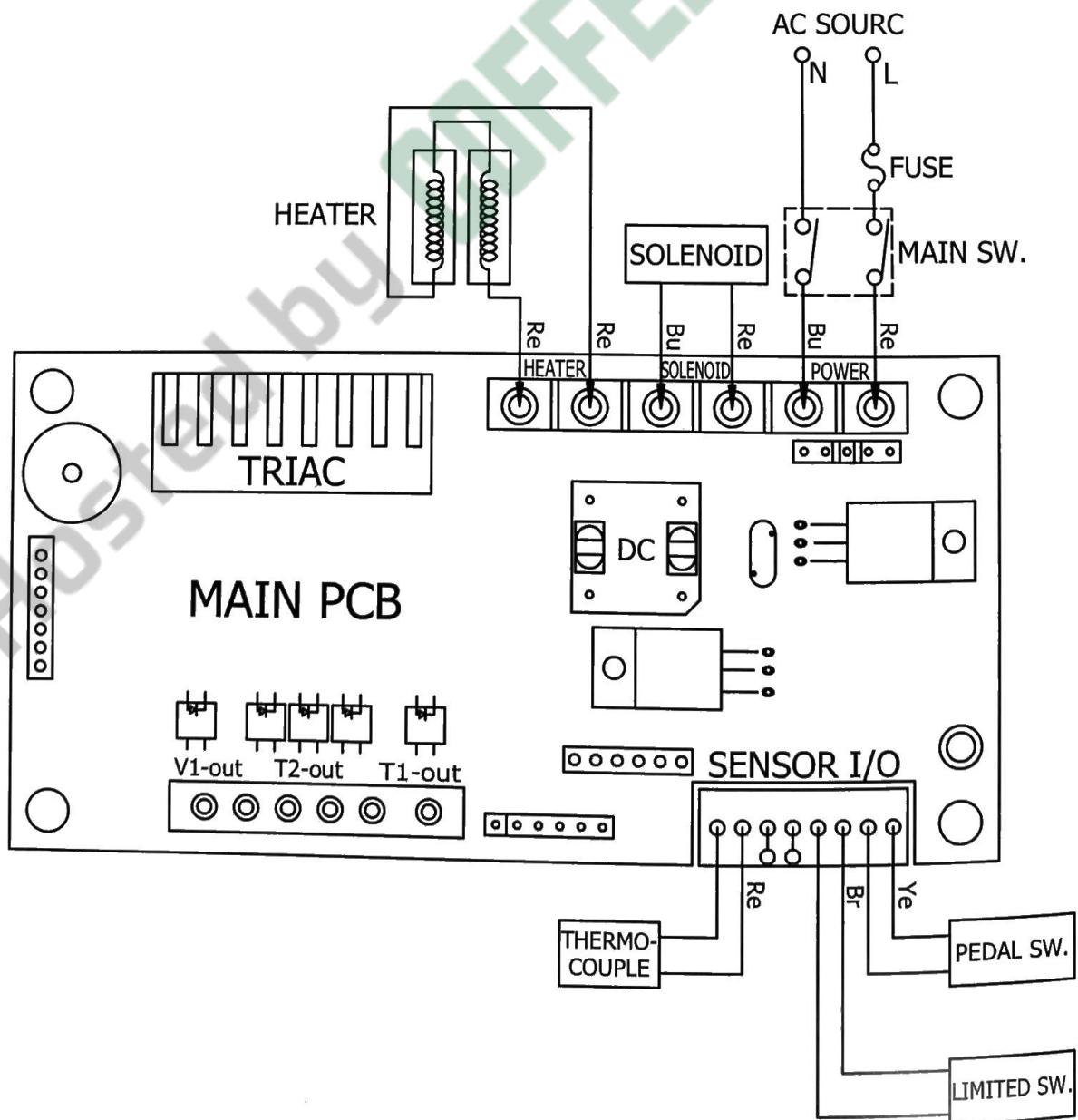
INSTRUCTION BOOKLET (CSA-SERIES)

- 1) Power Main SW.
2. Auto Switch & Lamp
3. Power Supply Card
4. Socket for Pedal SW.
5. Lamp Indicated than Timer & Temp.
6. Sealing Indication Lamp
7. Encode Knob
8. Pause / Play SW.
9. LED Lamp Window
10. Fuse Holder
11. Pedal Switch
- 12 Working Plate



5.

ELECTRIC CONNECTION DIAGRAM (CSA-SERIES)

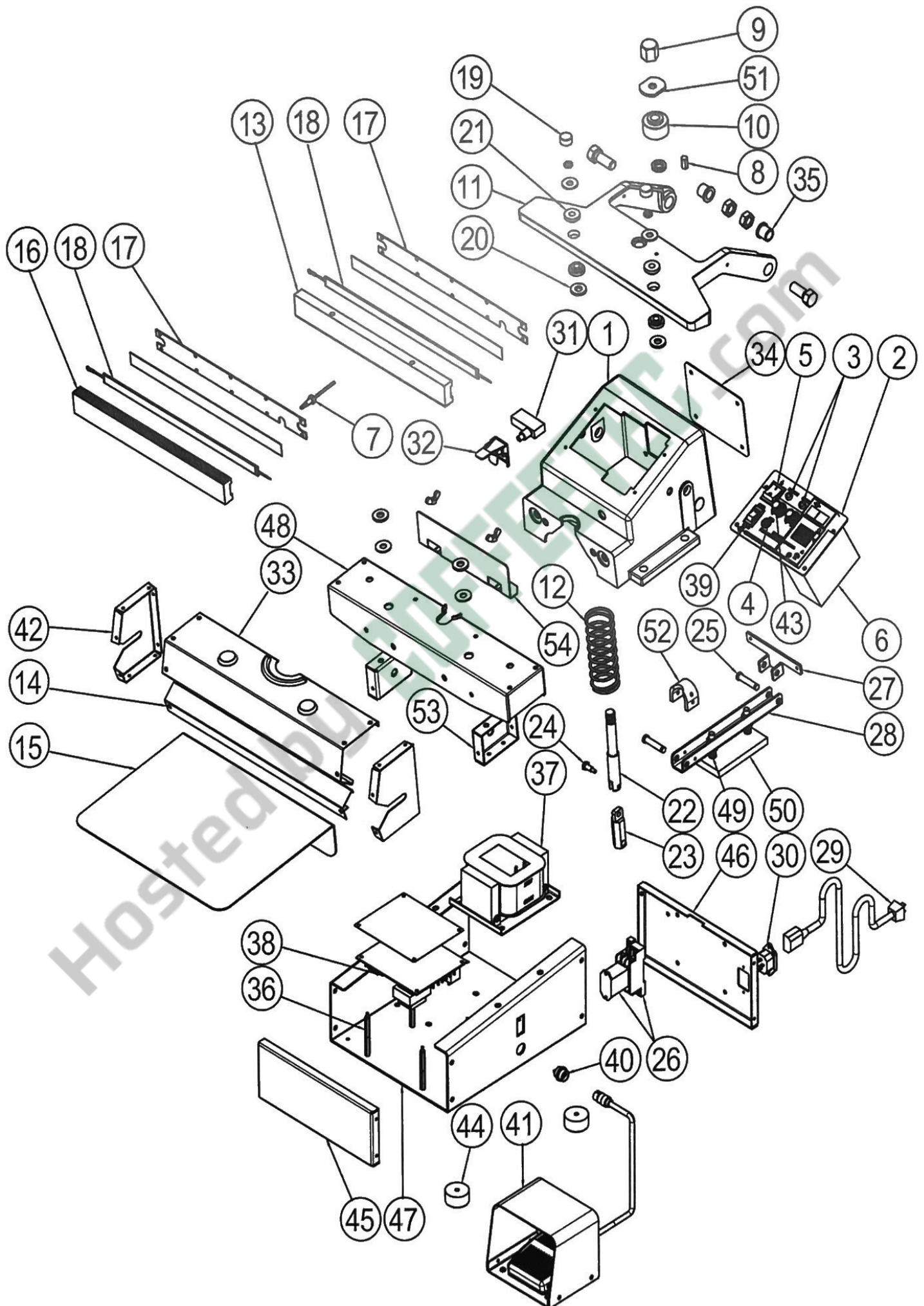


After the machine is fully assembled, do the following.

1. With the power plug into an AC outlet.
2. The LED window of controller to appear jaws temperature, when turn on the main switch to ON position. It is indication that power done to the unit.
3. Set the seal to be operated program, pressure the encode knob once and then the LED lamp of Heat Temp. will be illuminated. Adjust the encode control knob to the 110°C suitable scale for thickness and material of bag. It is the heating time about five minutes. To increase temperature turn knob of encode clockwise or to decrease it turn knob counterclockwise. Follows the same set to be done for Heat Time and Re-Cycle time. All setting be made, you should be to press the knob again for memory.
4. With bag open, position the bag onto seal bar to operate unit, step on pedal switch, the sealing jaws will close, and then be followed by sealing. The jaws will open automatically when cycle is completed. If sealing does not complete, turn the temp. control and sealing timer knob up a little and go through process repeat program. Keep increasing the number until you get desired seal and you can remove the sealed package and begin the cycle anew.
5. When you press Pause/ Play switch, the unit will stop and the window LED lamp appears "stop" until to be operated again and the window LED lamp appeared jaws temp.
6. When Auto. Switch was selected the unit will operate automatically according to your packing timer setting.
7. Turn off machine when not in use.

Note: Heat temp. & Heat time is according to the thickness and material of the plastic bags. Re-recycle timer is according to working speed of the operator.

CAUTION: The machine has an added safety feature for your protection. The sealer jaw will fail to close completely if a foreign object as a finger or tool is between the jaws. The LED lamp window appears "SEAL" and Beep automatically. To reactive the sealer when press Pause switch, Beep will stop and LED lamp window appears "StoP". Follow to press Pause switch ones, LED lamp window will be indicated jaws temperature. The unit will ready be operated again.



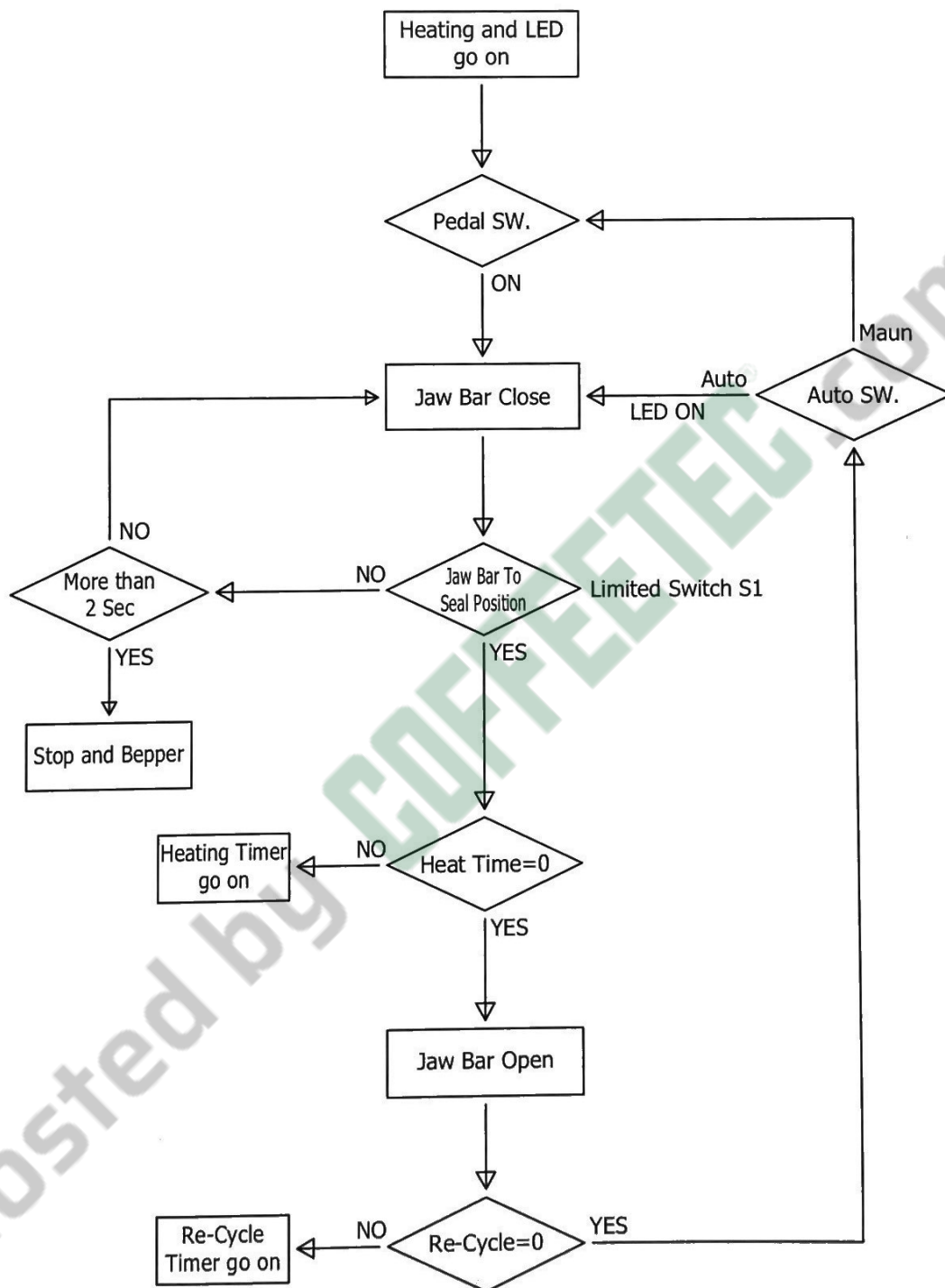
No	DESCRIPTION	PART No	No	DESCRIPTION	PART No
1	Enclosure Body	2B10-4002	28	Upper Jaw Lever	1C10-4052
2	Temp. Controller (CSA)	2F80-4100*	29	Power Plug	1E30-1032*
3	Pilot Lamps	1E40-3001	30	Socket (EMI Filter)	2E90-2013
4	Fuse Holder	1E70-4002	31	Limited Switch	1E10-3004
5	Power Main Switch	1E10-3000	32	Interlock Set	1C10-4003
6	Temp. Controller (CFA)	1E10-5002	33	Upper Jaw Protect Cover	1C10-5024*
7	Temp. Couple	1E70-5001	34	Enclosure Back Cover	1C10-5005
8	Setting Hexagon Nut	1D10-4008	35	Flange for Press Jaw	1D20-3004
9	Upper Lever Nut	1D10-4004	36	Support for PCB (CFA)	1A10-4010
10	Pressing Rubber	1G10-4002	37	Solenoid	1E20-3504*
11	Upper Press Jaw	2B10-5008	38	Control Main PCB	1F30-3002*
12	Return Spring	1R10-4001*	39	Manu / Auto Switch	1E10-3002
13	Upper Heating Jaw	1D10-5301*	40	Connect for Pedal SW.	1E10-3007
14	Lower Jaw Protect Cover	1C10-5025*	41	Pedal Switch	1E10-3003
15	Working Plate	1C10-4045*	42	Side Protect Cover	1C10-5026
16	Lower Heating Jaw	1D10-5301*	43	Time Adj. Knobs	1A10-1001
17	Plate of Heater Band	1C10-5092	44	Rubber Foot	1G10-4001
18	Heater Bands	1E60-5002*	45	Forward Cover	1C10-4025
19	PTFE Screw Caps	1J50-5002	46	Back Cover	1C10-4026
20	Heat Insulation Washer	1J90-5004	47	Enclosure Base	1C10-4051
21	Silicon Rubber Pads	1G20-5001	48	Lower Sealing Body	2C10-5018
22	Upper Lever	1D10-5058	49	Spring for Magnet Plate	1R10-3002
23	Down Lever	1D10-4012	50	Magnet Plate	1C10-3008
24	Screw for Down Lever	1D10-3017	51	Lock Washer for Lever	1C10-4085
25	Groove Pins	1D10-3007	52	Rubber Pad	1G10-5001
26	Relay & Socket (CFA)	1E90-5001*	53	Cover for Lower Body	1C10-5030
27	Hinge Bracket	1C10-4053	54	Limiter Adjust Plate	1C10-5031

*Model type/sizes will be selected.

9.

FLOW DIAGRAM

FLOW DIAGRAM



10.

SPARE PARTS

ACCESSORIES	Q'TY
Pedal Switch	1
Working Plate	1
Fuse	6.3Ax1

11. REPLACEMENT PARTS

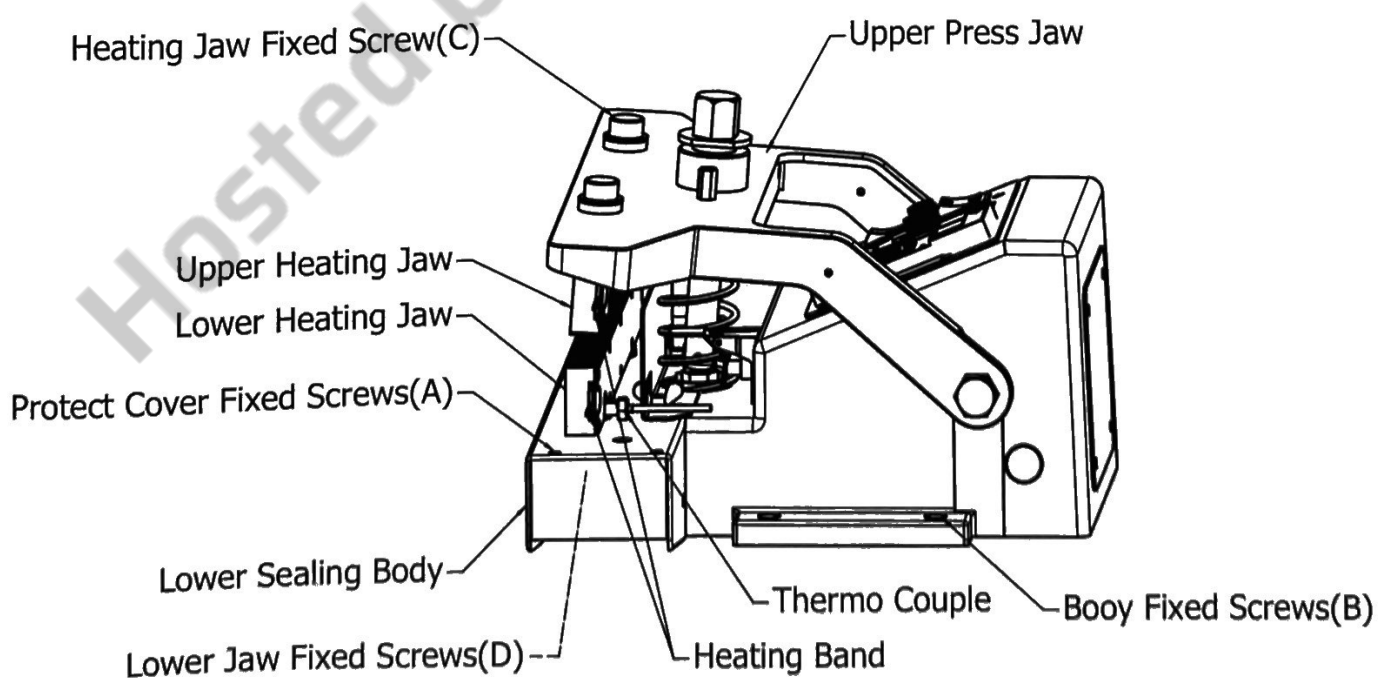
To replace burnt out heating band please follow these instruction:

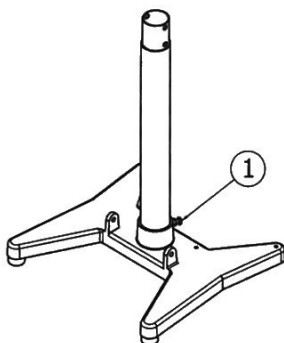
REMOVE PLUG FROM ELECTRIC OUTLET

USE ONLY GENUINE REPLACEMENT PARTS

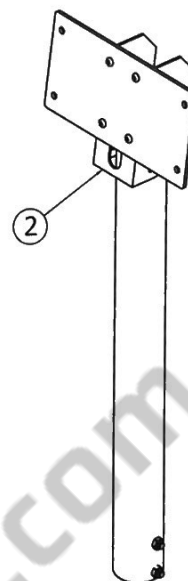
1. Replace the heating band.

- a. Loosen upper protection cover fixed four screws (A) form sealer unit.
- b. Loosen enclosure body fixed four screws (B), then pull up body form the enclosure base.
- c. Remove heating band lead wire form enclosure base terminal block.
- d. Remove upper heating jaw fixed two screws (C) form upper press jaw or lower heating jaw fixed two screws (D) form lower body base. Put out burned heating band form heating jaw.
- e. Replace new element band in heater jaw, and then tighten heating band use fixed plate.
- f. Replace fixed heating jaw on upper press jaw or lower body base. Connect heating band lead wire to terminal block.
- g. Replace fixed enclosure screws to enclosure base.
- h. Re-fix upper & lower protection cover to lower sealing body.

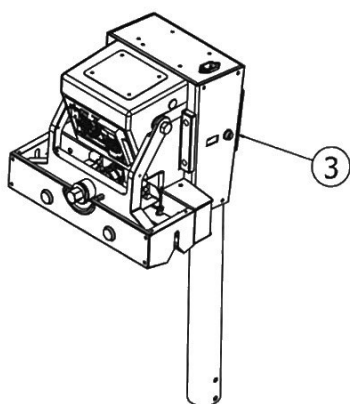




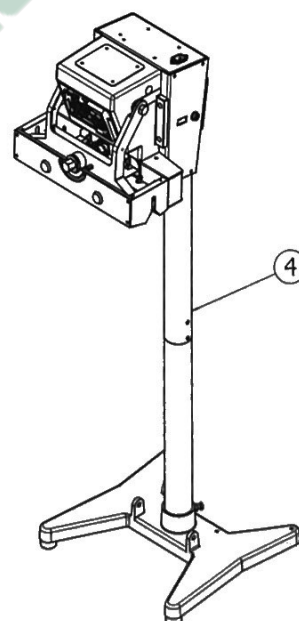
1. Insert the short standing tube into pedal base and fixed with two short screws.



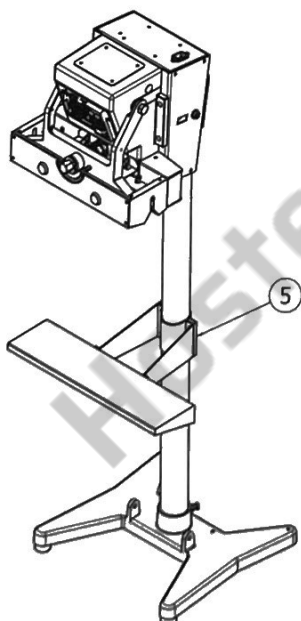
2. Adjust angles to keep same vertical between the stand tube and the bracket of body, and then with two M6 thumb knobs tighten fixed it.



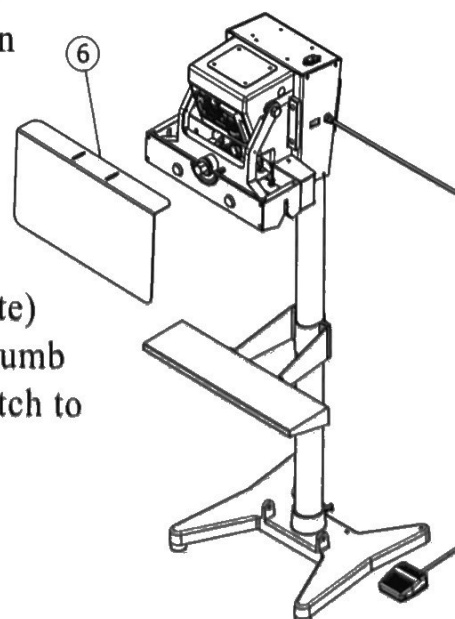
3. With four M8 screws connect the upper stand tube set to the bottom of enclosure body. crew and two M6 thumb knobs tighten fixed it.



4. Insert body upper stand tube set into lower stand tube base then fixed by two M8 bolt screws.



5. Fixed working bracket set to standing tube with four M6 screws.
Note: When attaching working bracket to standing tube leave enough space between lower sealing body and bracket so that working plate can be attached easily.

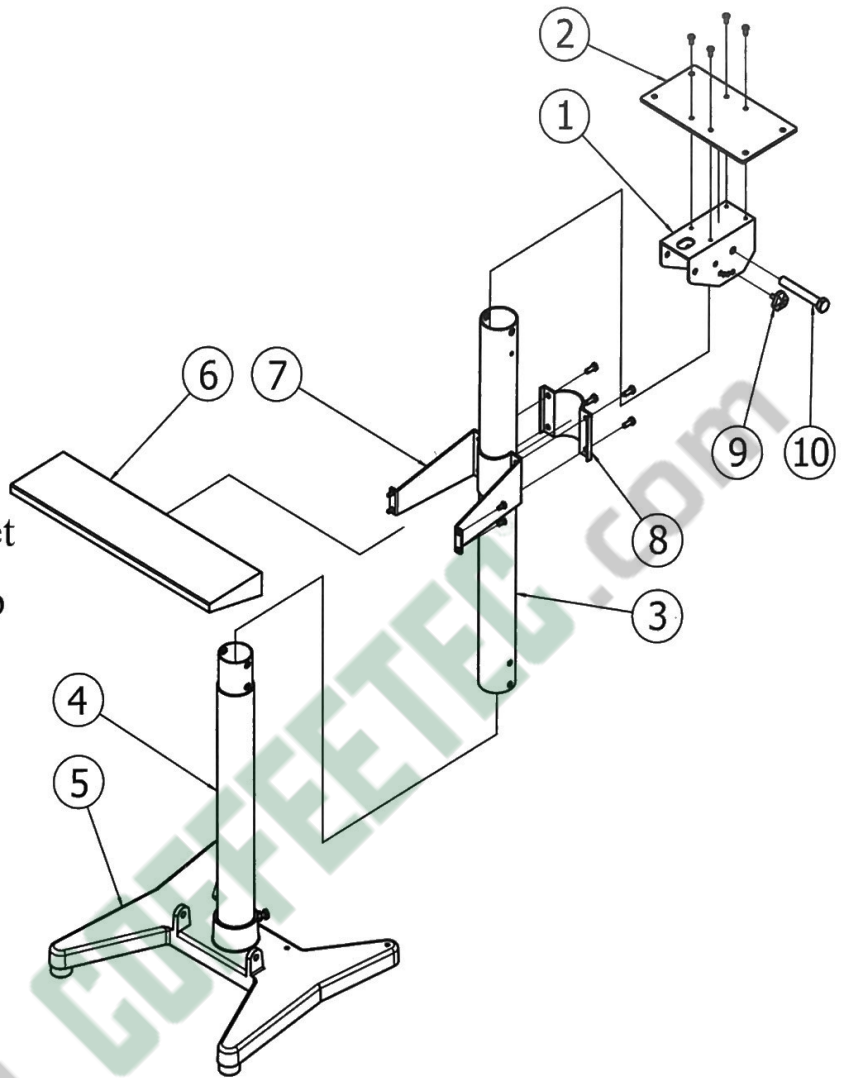


6. Fixed back plate (working plate) to under body jaw with two thumb nuts then connect the foot switch to the connector of body base.

13.

CFV SERIES ADDITIONAL CONSTRUCTION

- 1) Body adjust Bracket
- 2) Body Connect Plate
- 3) Upper Standing Tube
- 4) Lower Standing Tube
- 5) Pedal Base
- 6) Working Plate
- 7) Working Bracket
- 8) Clip for Working Bracket
- 9) M6x12mm Thumb Knob
- 10) M8x80mm Bolt Screw



14.

HELPFUL INFORMATION

- 1) Always keep the sealing platform clean. Particular care should be taken to remove any residue from the heater jaw.
- 2) Do not clean the sealing platform with anything wet.
- 3) Occasionally check the condition both side of the heater jaw set. A poor heater jaw platform will effect on the quality of your seal.
- 4) **USE ONLY GENUINE REPLACEMENT PARTS**

Add. information: THE TEMPERATURE CONTROLLER IS CALIBRATED IN CENTIGRADE °C TO CONVERT TO FATHRENHEIT °F (°C X 8/5 +32= °F)

CAUTION:

The machine has an added safety feature for your protection. The sealer jaw will fail to close completely if a foreign object as a finger or tool is between the jaws. To reactive the sealer, turn off the power main switch, wait 3 seconds and put switch back on, machine will again be operational.

15. CAUTIONARY MARKING

FOR SAFETY SAKE KEEP HANDS AND FINGERS FORM BETWEEN THE JAWS WHEN SEALERING.

CAUTION:

1. This appliance is not to be used by persons (including children) with reduced physical, sensory or mental capabilities, or lack of experience and knowledge, unless they have been given supervision or instruction.
2. To provide continued protection against risk of electric shock, connect to properly grounded outlet only.
3. If the supply cord is damaged, it must be replaced by the manufacture, its service agent or similar qualified persons in order to avoid a hazard.

WARNING:

1. For continued protection against fire or electric shock, Replace only with type cartridge and 6.3 ampere fuse, provided in legible adjacent to fuse holder.
2. Close supervision is required when the product is used near children.
3. To reduce the risk of shock, disconnect the unit from the supply circuit before servicing the replacement of the heating element.

16. SPECIFICATIONS

MODEL NO.	200CFA/ CSA	300CFA/ CSA	400CFA/ CSA	600CFA/ CSA
Max. Seal Length	200mm (8")	300mm (12")	400mm (16")	600mm (24")
Seal Width	10mm,15mm	10mm,15mm	10mm,15mm	10mm
Max. Seal Thickness	2x 0.25mm	2x 0.25mm	2x 0.25mm	2x 0.25mm
Temp. Range (°C)	80-199/ 80-250	80-199/ 80-250	80-199/ 80-250	80-199/ 80-250
Heat Timer (sec)	0.2-2.2/ 0.3-3.5	0.2-2.2/ 0.3-3.5	0.2-2.2/ 0.3-3.5	0.2-2.2/ 0.3-3.5
Re-Cycle Timer (sec)	1.0-8.0/ 1.0-10S	1.0-8.0/ 1.0-10S	1.0-8.0/ 1.0-10S	1.0-8.0/ 1.0-10S
Watts (W)	350 W	450 W	520 W	640 W
Weight (Kg)	15 Kg	17 Kg	20 Kg	23 Kg
Dimension (W*D*H)	26*29*30mm	36*29*30mm	46*29*30mm	66*29*30mm

CFA & CFV series model date all are same.

CFV & CSV series model for vertical to operate.