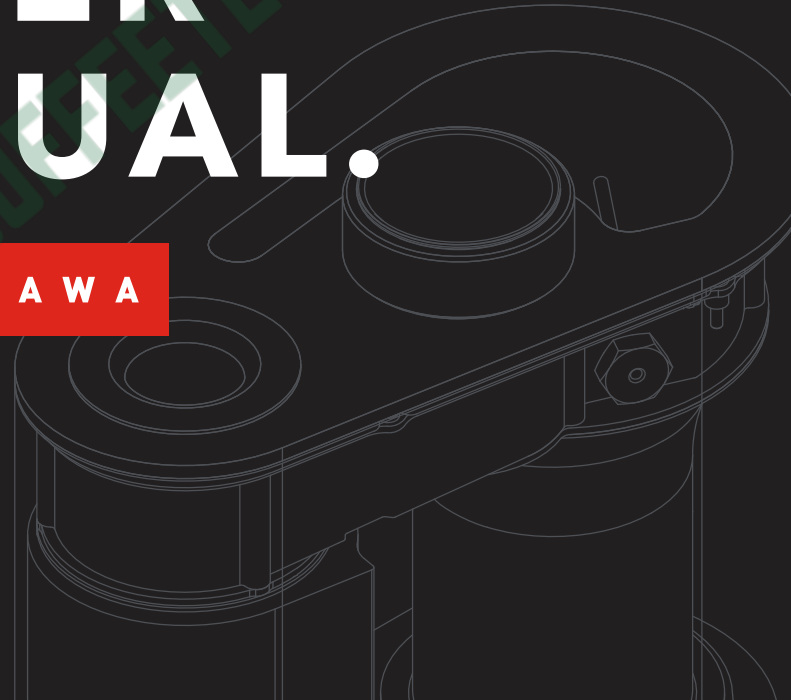


USER MANUAL.



I K A W A



IMPORTANT SAFEGUARDS – SAVE THESE INSTRUCTIONS

- Read all instructions carefully before using any appliance
- Always ensure that the voltage on the rating label corresponds to the mains voltage.
- Incorrect operation and improper use can damage the appliance and cause injury to the user.
- Regularly check the power cord and plug for any damage. If the cord or plug is damaged it must be replaced by IKAWA or qualified person to avoid an electrical hazard.
- Do not use the appliance if it has been dropped or damaged in any way. In case of damage return the appliance to IKAWA for repair.
- Never immerse the unit in water or any other liquid for cleaning purposes.
- Do not use the appliance on a wet surface.
- Remove the plug from the socket by gripping the plug. Do not pull on the cord to disconnect the appliance from the mains. Always unplug the unit when it is not in use, before cleaning or when adding or removing parts.
- The use of accessory attachments or Apps that are not recommended or supplied by IKAWA may result in injuries, fire or electric shock.
- Always ensure that the roaster is used on a hard flat surface. Never use the roaster on a soft surface or tablecloth.
- Never leave the appliance unattended while in use or powered.
- Instructions for cleaning the appliance are located of page 19 of this manual.

These safety instructions continue on the following page.

- This appliance is intended to be used in household and similar applications such as:
 - Staff kitchen areas in shops, offices and other working environments;
 - Farm houses;
 - By clients in hotels, motels and other residential type environments;
 - Bed and breakfast type environments.
- This appliance can be used by children aged from 8 years and above and persons with reduced physical, sensory or mental capabilities or lack of experience and knowledge if they have been given supervision or instruction concerning use of the appliance in a safe way and understand the hazards involved. Children shall not play with the appliance. Cleaning and user maintenance shall not be made by children unless they are older than 8 and supervised. Keep the appliance and its cord out of reach of children less than 8 years.
- The instructions for cleaning this appliance (located on page 19) must be followed.
- This appliance must not be operated by means of an external timer or separate remote-control system.
- This is the hot surface symbol. It indicates that a surface gets hot and must not be touched.
- In order to override the smart enabled function, unplug the appliance.



Hosted by **COFFEETEC®**.com

CONTENTS

01	Welcome and contents of the pack	6
02	Your IKAWA Sample Roaster	7
03	Positioning your roaster	8
04	Setting-up your roaster	9
05	Connecting the IKAWA Pro App to the roaster	10
06	Roasting	11
07	Removing the beans from the roaster	17
08	Troubleshooting	18
09	Maintenance, repair and disposal	20
10	Warranty	21



Designed and manufactured by IKAWA in London.

www.ikawacoffee.com
support@ikawacoffee.com



01 – WELCOME

IKAWA MEANS COFFEE IN BURUNDI URAKAZE. WELCOME.

Welcome and thank you for purchasing an IKAWA Sample Roaster.

IKAWA is continuously improving its product range. Please visit **www.ikawacoffee.com** for all updates. Products manufactured by IKAWA are safe and without risk provided they are installed, used and maintained in good working order in accordance with our instructions and recommendations. To enjoy the full potential of your new product, please take the time to read this guide thoroughly, and keep it handy for future reference.

NOTICE:

- 1 Read all of these instructions including important safeguards.
- 2 Retain this guide for later use.
- 3 Pass on this guide in the event of change of ownership.
- 4 Follow all warnings, cautions and instructions contained in this guide.
5. When the product has reached the end of its serviceable life, it should be disposed of in accordance with WEEE directive..



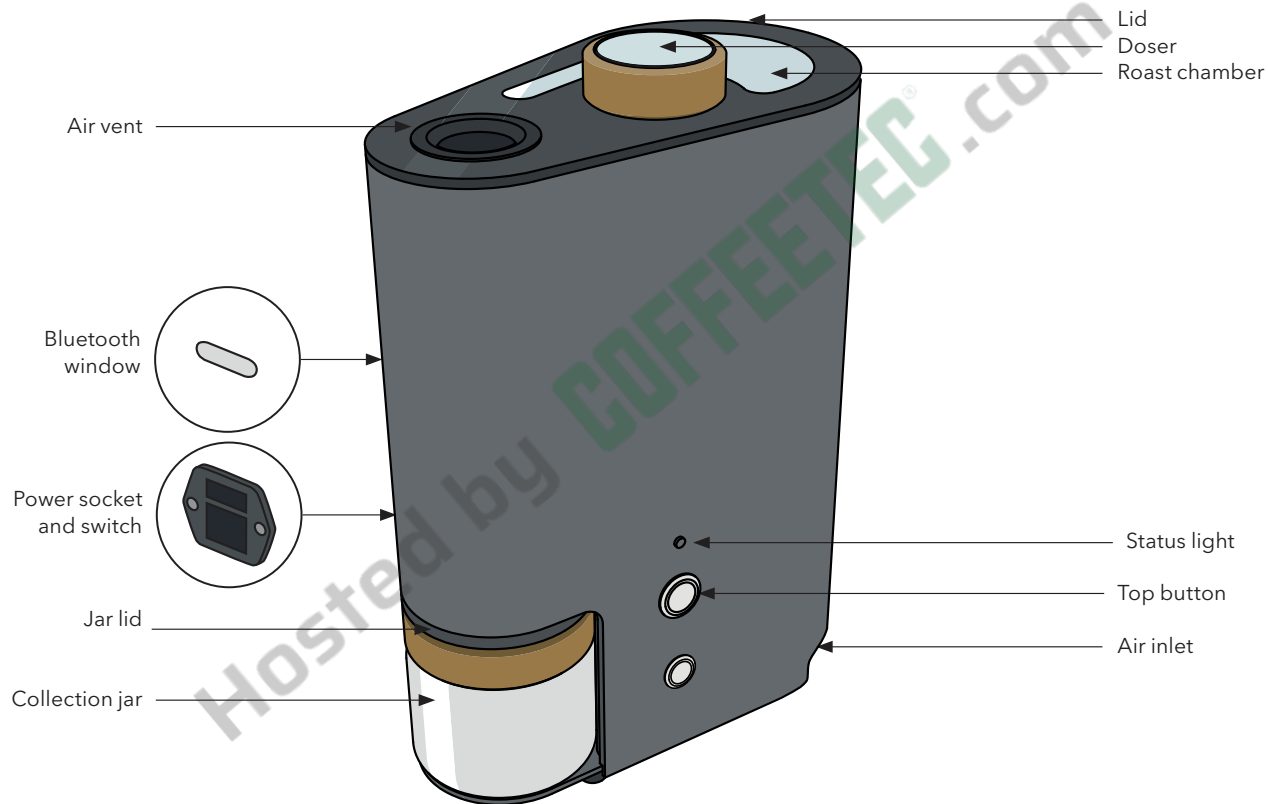
CONTENTS OF THE PACK

Welcome and thank you for purchasing an IKAWA Home Coffee Roaster.

- ① One IKAWA Pro Sample Roaster
- ② One doser
- ③ One jar lid
- ④ Two glass jars
- ⑤ One power cord (country specific)



02 – YOUR IKAWA SAMPLE ROASTER



03 – POSITIONING YOUR ROASTER

- 1 Place your roaster on a hard surface with plenty of space around it to access all of the sides and the top of the roaster. Never use the roaster on a soft surface of tablecloth as that will affect the airflow.
- 2 During the roasting process hot air is released through the vent of the roaster. Do not obstruct the vent or place anything on top of it.

CAUTION

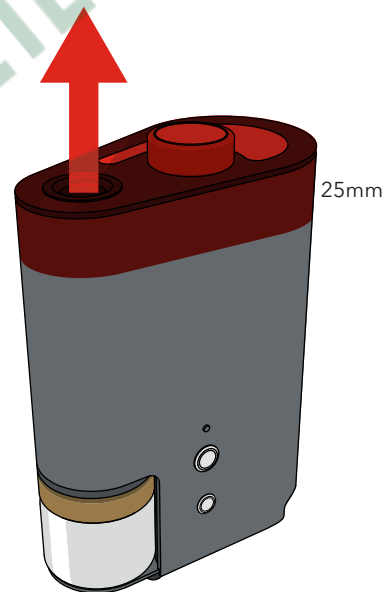
The roaster heats up during the roasting process and some surfaces can get very hot. Take care as touching these surfaces may cause injury.

Do not touch any parts of the lid or air vent.

Do not touch surfaces of the roaster that are within 25mm of the lid.

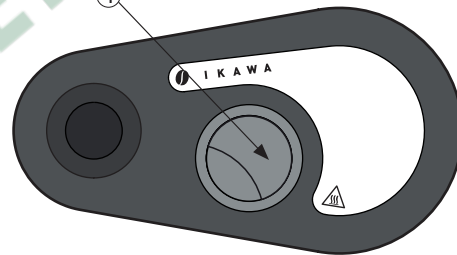
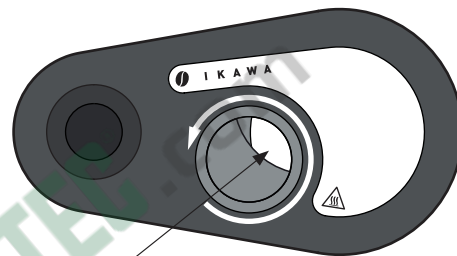
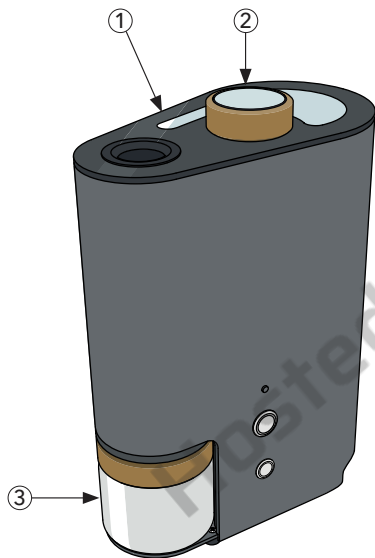


This is the hot surface symbol. It indicates that the surface is hot and must not be touched.



04 – SETTING UP YOUR ROASTER

- ① Ensure the lid is on the roaster.
- ② Place the doser into the hole at the top of the roaster.
- ③ Slide the jar with the rubber lid on top into the opening at the bottom of the roaster.
- ④ Ensure that the doser completely seals off the roasting chamber. If not, turn the doser until it is sealed.



CAUTION:

Ensure that the jar with rubber lid is in place.
Ensure the roaster lid is in place.



05 – CONNECTING THE IKAWA PRO APP TO THE ROASTER

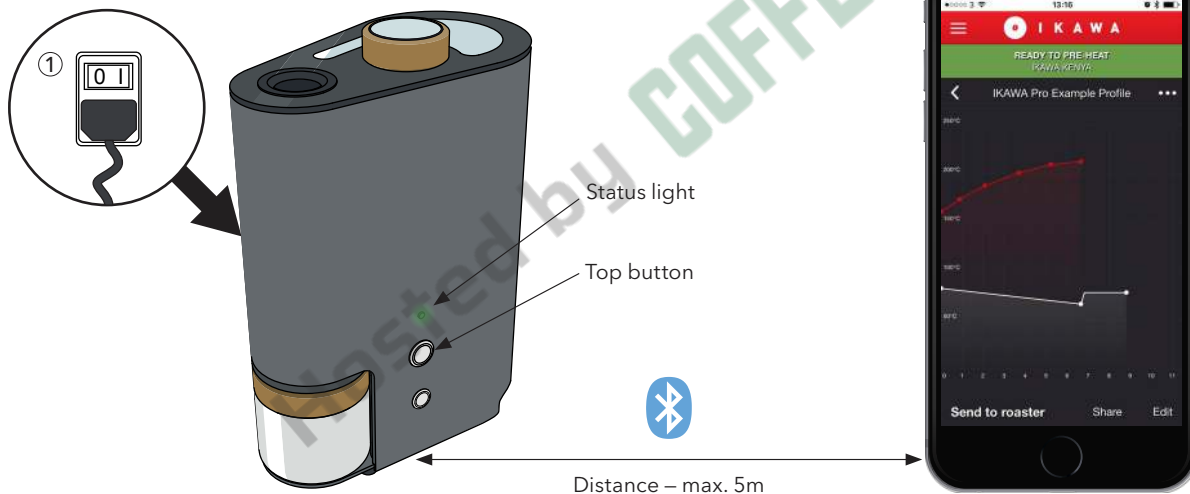
Before starting this step ensure that you have gone through the steps on the previous page and that your roaster is plugged into a wall socket.

- ① Turn the roaster ON by pressing the 1-side of the roaster's power switch, located on the left side.

The status light should now be green and the go button should light-up white.

(If the status light flashes red/green alternating – shut the doser as indicated on the previous page).

- ② When Bluetooth is enabled on your iOS or Android device, the IKAWA Pro App will automatically connect to the roaster. Once connected, program the roaster with a roast profile. Instructions on how to use the IKAWA Pro App are provided separately as the app design can change over the life of the roaster. Instructions for the latest app are available at www.ikawacoffee.com



06 – ROASTING: PRIMING WITH COFFEE

WARNING:

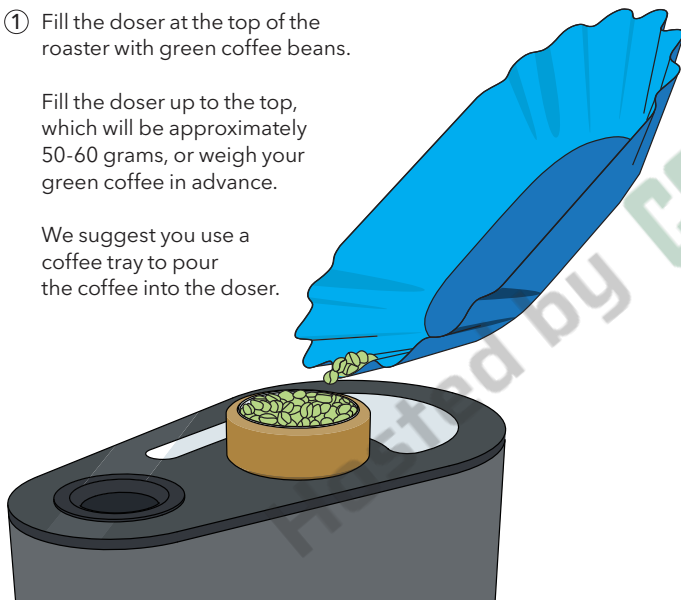
Before continuing, ensure that the roaster is not in operation and that the doser is closed (see previous page) make sure the roasting chamber is closed and the jar with it's lid is in position.



- ① Fill the doser at the top of the roaster with green coffee beans.

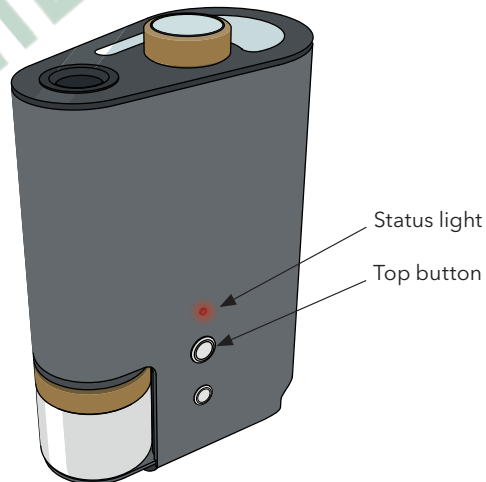
Fill the doser up to the top, which will be approximately 50-60 grams, or weigh your green coffee in advance.

We suggest you use a coffee tray to pour the coffee into the doser.



- ② Start the roasting process by pushing the top button of the machine.

The machine will start pre-heating to the starting temperature.



06 – ROASTING: PRE-HEATING

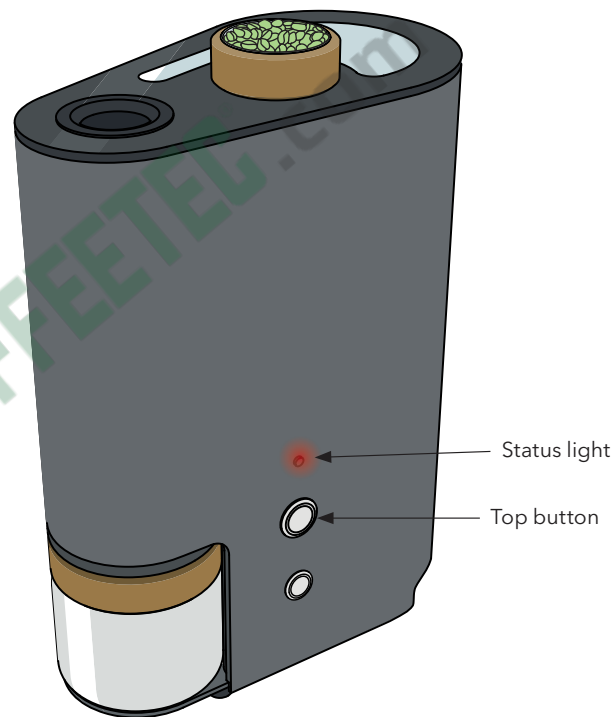
The IKAWA Pro App will show that the roaster is pre-heating by displaying the current temperature in the roaster.

If you want to cancel the pre-heat mode, press the top button on the roaster. The roaster will start to cool-down (see following pages).

Once the roaster has heated to the starting temperature, the status light on the roaster blinks red.

If the roaster temperature does not reach and stabilise at the profile starting temperature, or the user does not press the top button after three minutes, the roaster will automatically switch into cool down mode and the status light will flash blue.

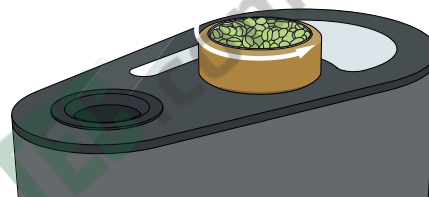
If the roaster is cold and/or profile starting temperature is high and/or the profile starting fan speed is high the roaster may not reach and stabilise at the starting temperature within two minutes. If this happens try pre-heating the roaster again after the cool down mode has finished.



06 – ROASTING: DOSING

CAUTION:

Hot surface – the roaster lid could be very hot do not touch any parts or surfaces other than the cork grip on the doser.



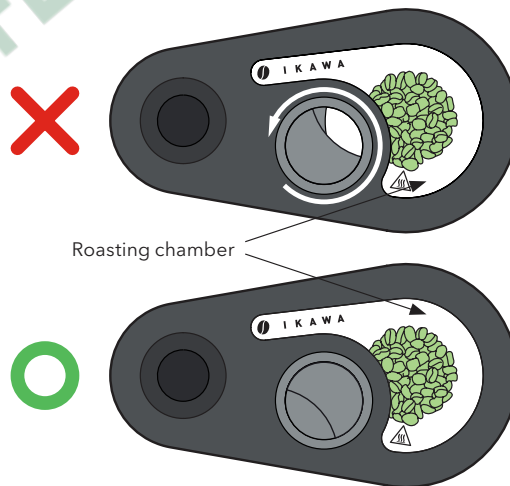
- ① Turn the doser halfway so that all the beans fall through the hole of the doser into the Roasting Chamber.

The fan will stop while the doser is open and status light will blink red and green.

- ② Turn the doser back so that it closes off the Roasting Chamber completely.

The fan will speed up again and the status light on the roaster should stop blinking and be steadily red (if this is not the case, the doser is most probably not shut properly).

The roaster will now start the roasting process.



06 – ROASTING: ROASTING

During the roasting process an the IKAWA Pro App connected to the roaster via Bluetooth and will plot the measured temperature.

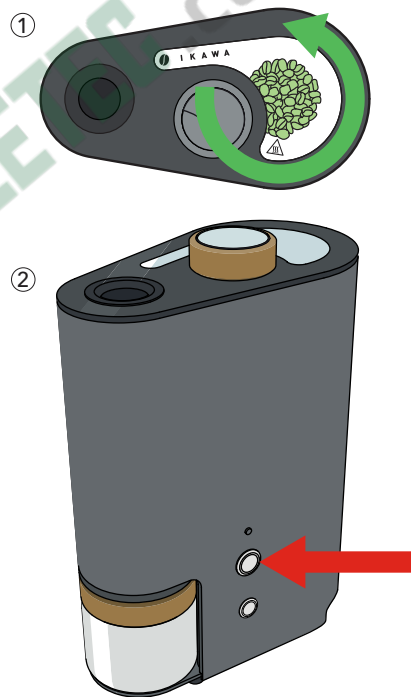
Even if the App is not connected, the roaster will execute the profile stored in it's memory - the last one used.

If the roaster has been programmed with a profile that is not suitable for the coffee, the beans can burn or in extreme cases catch fire.

We advise you follow these steps during the roasting process.

CAUTION

- ① When the roast starts ensure that the beans are rotating freely.
- ② If the beans are not rotating freely stop the roast by pressing the top button.



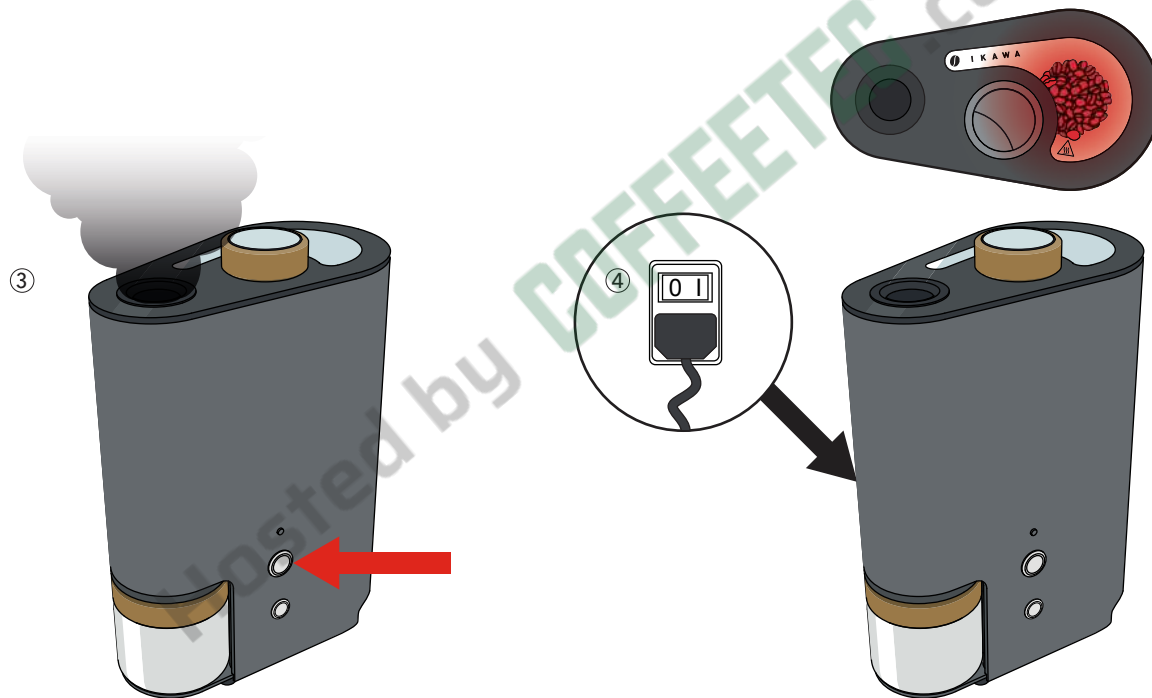
CAUTION

- ③ If the roaster starts to produce excessive smoke press the top button.



CAUTION

- ④ If the coffee beans in the roast chamber catch fire, switch the roaster off at the power inlet or wall socket and then wait until the fire has gone out. The fire will be contained within the roaster.



06 – ROASTING: COOL DOWN

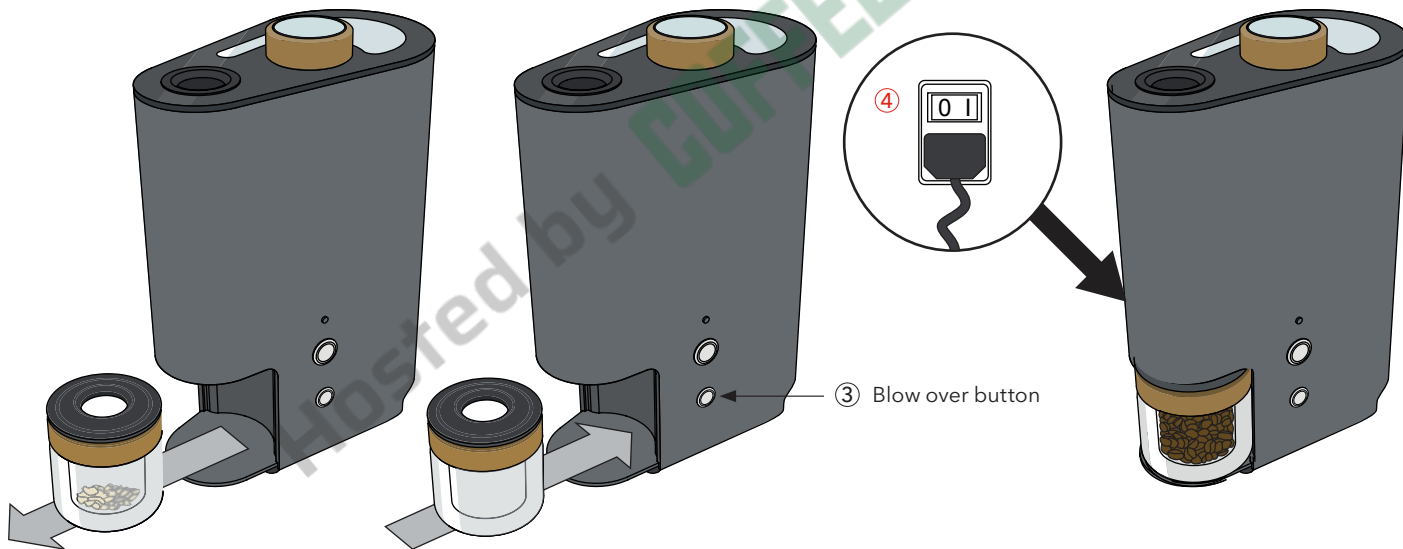
Once the roasting process is finished, the roaster goes into cool-down mode. This is indicated by the blue status light on the roaster.

Wait until the fan stops running and the status light becomes green again. The cool-down process has now finished.



07 – REMOVING THE BEANS FROM THE ROASTER

- ① Take the glass jar, containing chaff out of the roaster and throw the chaff away (remember to take off the jar lid).
- ② Put the jar with lid back in the roaster.
- ③ Now, press and hold the blow over button on the roaster to make the beans blow over to the glass jar.
- ④ **SWITCH THE ROASTER OFF AFTER ROASTING.**



08 – TROUBLESHOOTING

PROBLEM:

The roaster starts to cool during a roast and will no longer heat regardless of the profile it is programmed with.

CAUSE:

A thermally activated switch prevents the case heating to an unsafe temperature. This switch should not activate under normal roasting conditions but may activate if the roaster was programmed with an extreme roast or in high ambient temperatures.

If the thermal safety switch is activated the heating element will switch off and the roaster will cool down, although it will otherwise appear to operate as normal.

SOLUTION:

Allow the roaster to cool for at least 30 min. Switch it on and see if it works again. If the the roaster does not work contact IKAWA.

PROBLEM:

The light on the roaster shines a purple colour and the roaster does not work.

CAUSE:

The roaster in an error state that could be triggered by a number of problems.

The most likely causes are:

1. The temperature sensor is broken.
2. The ambient air temperature is less than 10 °C.

SOLUTION:

1. Contact **support@ikawacoffee.com**, quoting your roaster serial number.
2. Try using the roaster in a warmer place.

PROBLEM:

The beans inside the roaster do not rotate.

CAUSE:

The roaster may be programmed with a roast profile with inadequate air flow.

SOLUTION:

Program the roaster with a higher fan speed using the IKAWA Pro App.

PROBLEM:

The beans inside the roaster do not rotate.

CAUSE:

This may happen because your beans have not roasted sufficiently. They may be too heavy to be transferred from the Roasting Chamber into the jar.

SOLUTION:

1. Turn off your machine and disconnect the power supply.
2. Ensure your machine is cooled down by letting it stand for at least 30 minutes.
3. Then take out the doser and jar.
4. Remove the glass lid by pulling upwards on each side (the lid is attached magnetically).
5. You can remove the beans by tilting the machine on it's side to pour them out.

09 – MAINTAINANCE, REPAIR AND DISPOSAL

Before attempting any maintenance ensure that the roaster is unplugged from any power source, and that the roaster is at room temperature.



WARNING:

Do not repair the IKAWA system yourself. By doing so you invalidate any warranty, and risk injury or death.



The jar can be washed with warm, soapy water but only when the cork grip is removed. The cork should not get wet. The jar cannot go in the dishwasher or microwave.

To clean the glass lid, first remove the doser. Second, remove the glass lid by pulling upwards on each side (the lid is attached magnetically). You can wash the glass lid including the metal vent with warm, soapy water. The lid cannot go in the dishwasher or microwave.

To clean the roasting chamber use a damp cloth or pan scrubber. It is very important to ensure that the sponge or pan scrubber is not waterlogged so water does not escape and penetrate the holes in the bottom of the roasting chamber.

If your system is not working correctly, refer to Chapter 08 (Troubleshooting).

If your IKAWA Pro Sample Roaster is no longer working and not under warranty, contact the team at support@ikawacoffee.com for assistance.

DISPOSAL:

Waste and electrical products should not be disposed of with household waste. Please contact our technical team for recycling/disposal advice as regional variations apply.

WARNING:

Ensure that no liquid penetrates the holes in the bottom of the roasting chamber.



10 – ONE YEAR WARRANTY

This product carries a one year warranty from date of purchase. If any defect arises due to faulty materials or workmanship faulty products must be returned to IKAWA for repair or replacement.

The following conditions apply:

- 1** The product must be installed and used in accordance with the instructions contained in this instruction guide.
- 2** It does not cover wear and tear, damage, misuse or consumable parts.
- 3** IKAWA has no responsibility for incidental or consequential loss or damage.

Hosted by COFFEETEC.com

MODEL NO: PRO V3
FOR USE WITH THE IKAWA PRO APP

designed and made by IKAWA in London



©IKAWA limited 2011-2018
www.ikawacoffee.com | support@ikawacoffee.com

IKAWA Ltd. Unit 9, Bayford Street Business Centre,
Bayford Street, London, E8 3SE, United Kingdom